

Firmware Update

1. Find and double-click to open the program update software "ilitekUSBUpgradeTool.exe" ;

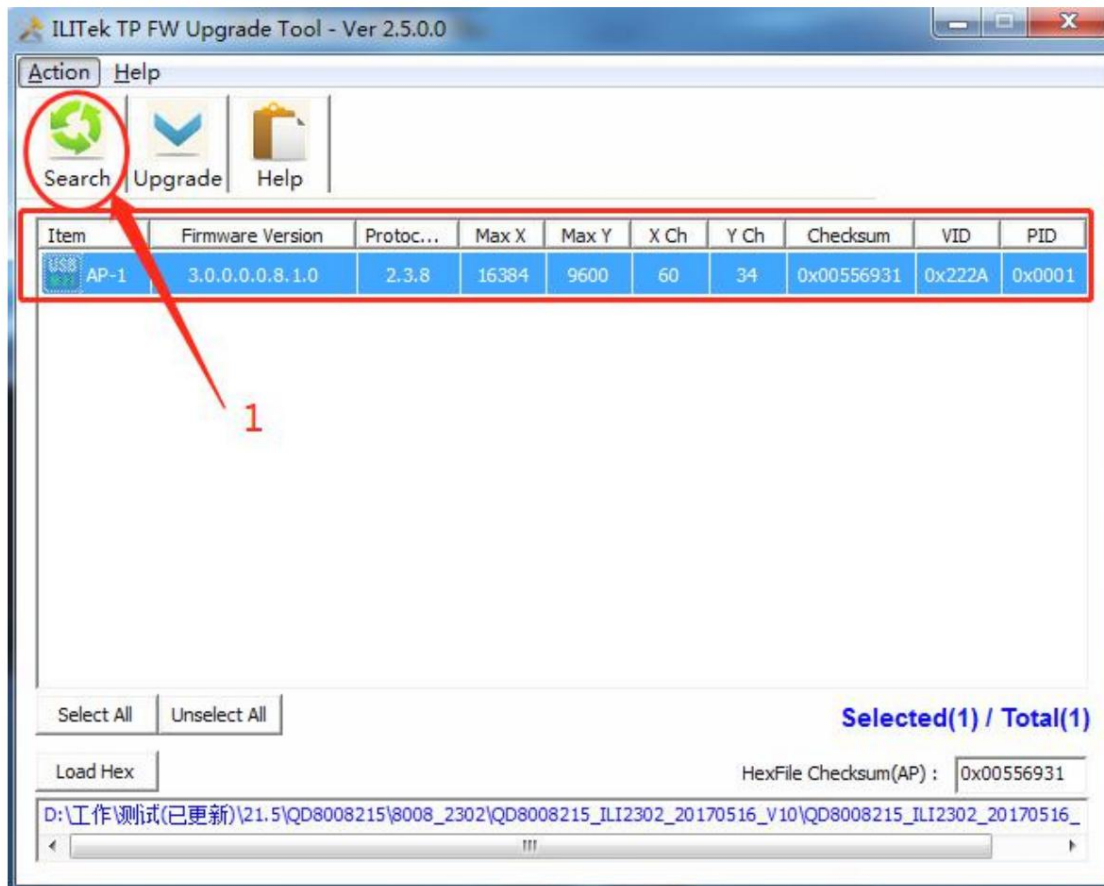


2. Click "Search" in the upper right corner of the opened software interface to search for the

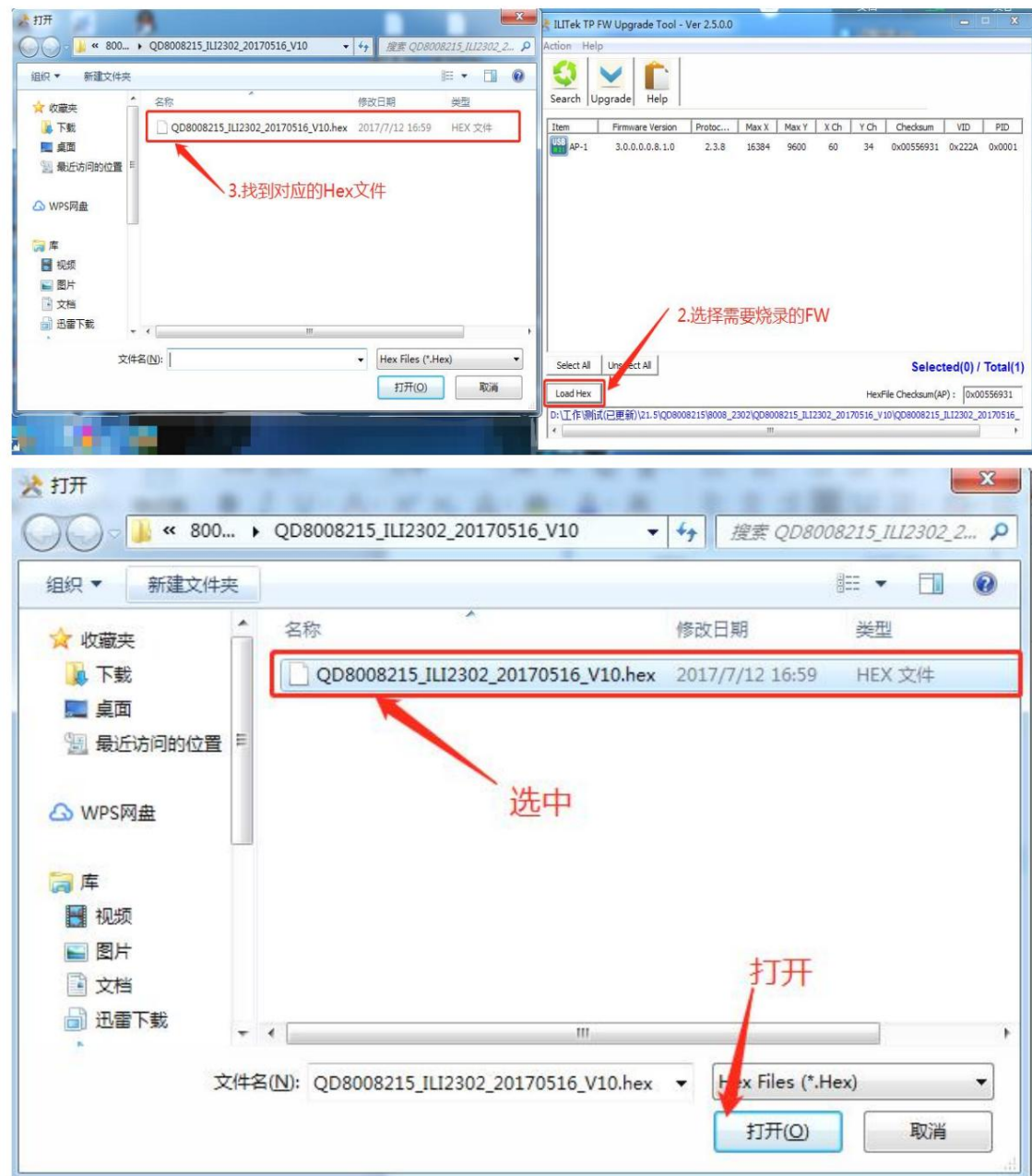
After searching for the connected control card, the software interface will display the corresponding Item and

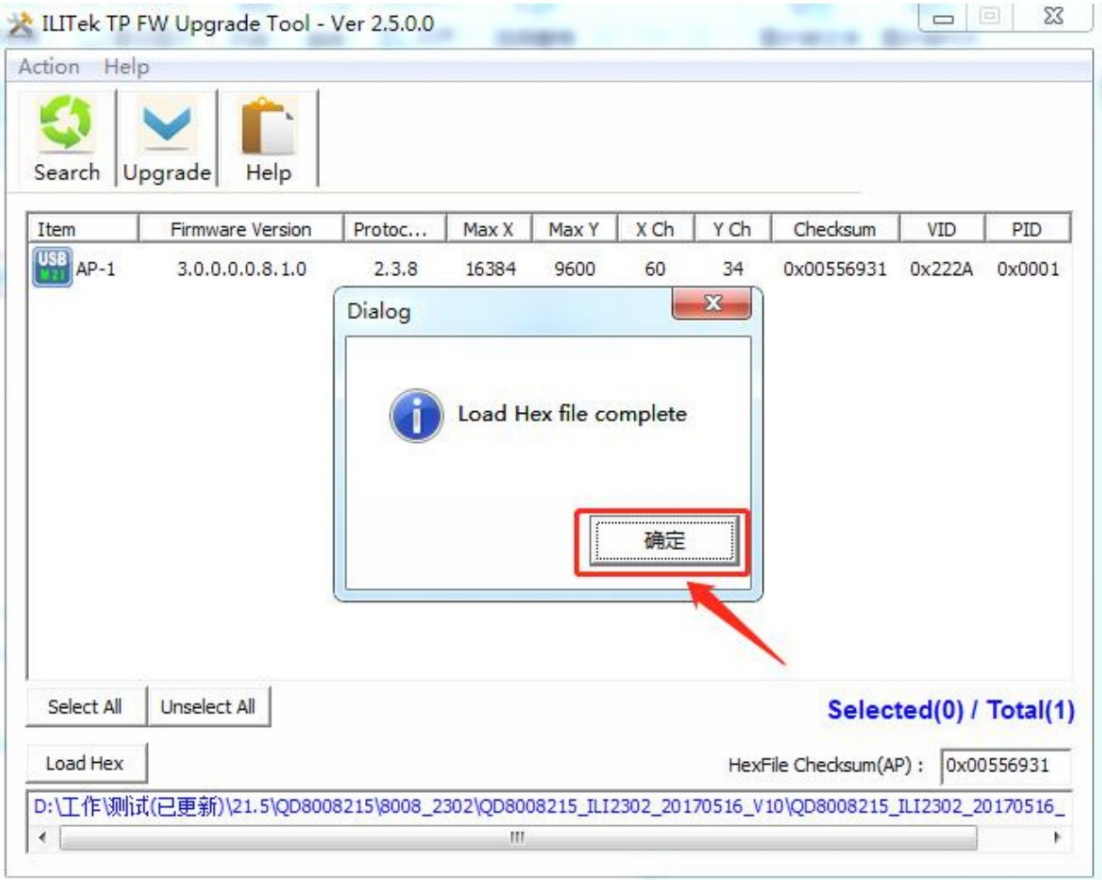
PID/VID, if the corresponding control card is not found, you need to confirm the control card and

Are the computers connected properly?

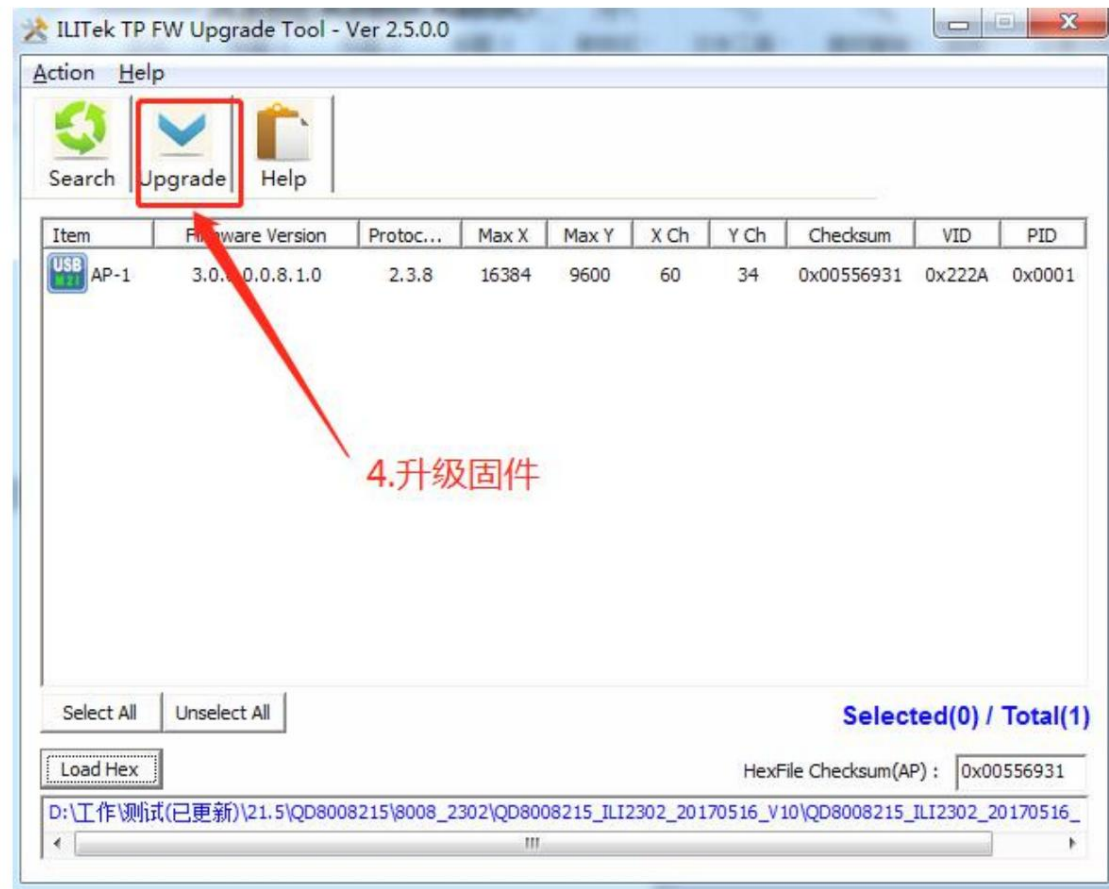


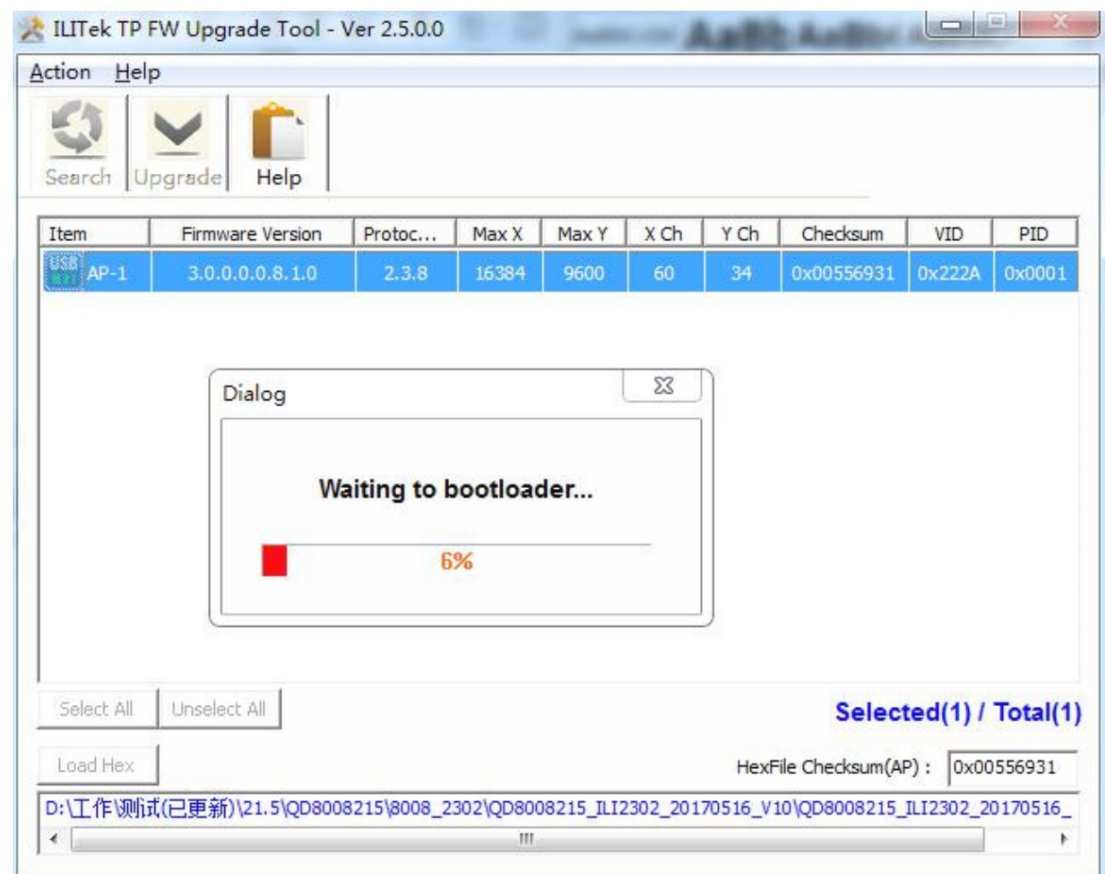
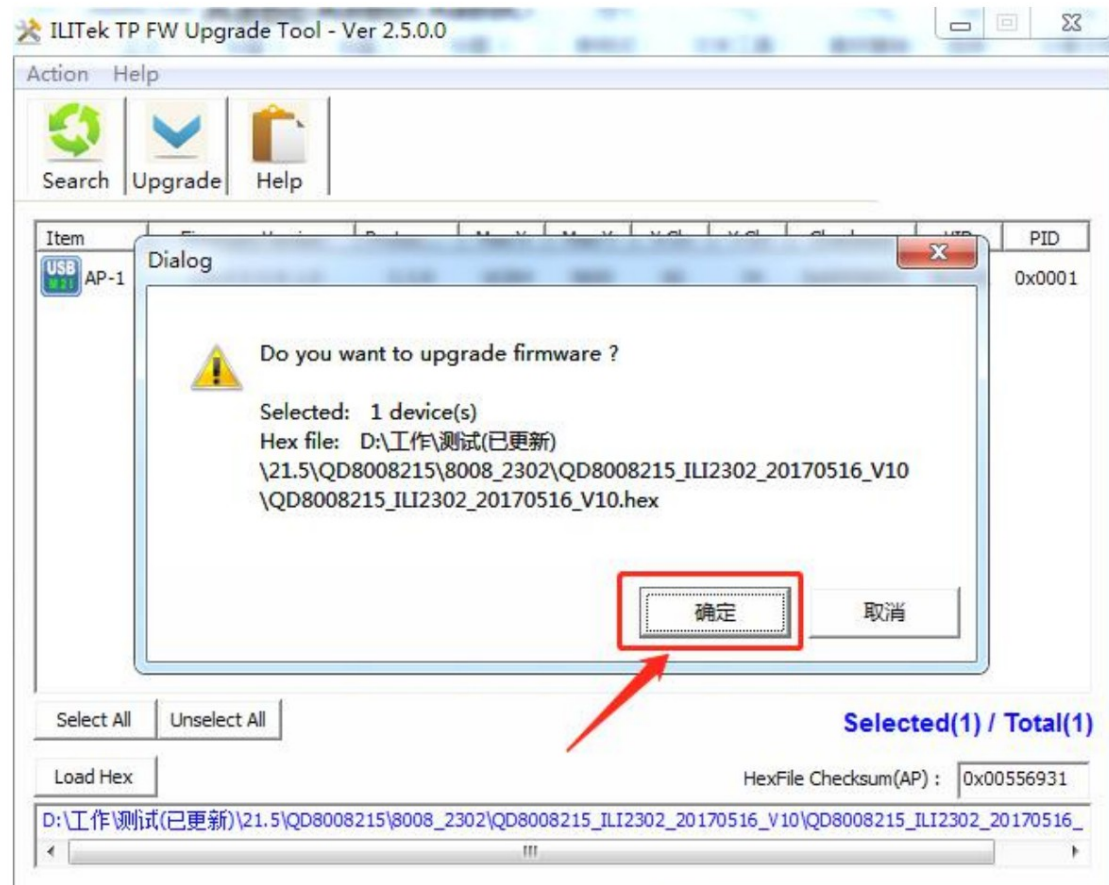
3. Load the Hex file to be upgraded





4. Click **Upgrade** to start the upgrade (do not turn off the power during the upgrade)





5. Burning is completed;

